

# TRI-N <sup>8th Annual</sup> BULL SALE CHAROLAIS

Featuring Manitoba's Largest Sale Offering of Red Factor Charolais

*Offering... 56 Quality Charolais Bulls  
Pick of the 2022 Replacement Heifer Pen*



*38 Years in Red, White and Tan*

**MONDAY, MARCH 20, 2023 - 2 PM**

*~ on the farm - Lenore, MB ~*



*Merv, Joanne & Jesse*

## *8th Annual Tri-N Charolais Farms Bull Sale!*

Welcome to the 8th Annual TRI-N Charolais Farms bull sale!

*The number says 8 but its our 38th year in business!*

Every day on this earth one can be thankful for your blessings. When you love what you do and work with people with similar values as yourself, it makes it even more of a blessing.

I'm truly lucky to have my dad (Mervin) as a mentor in this business and how he got myself involved at a young age. I remember being an awkward 12-year-old

boy watching the 2000 Yellowhead Bull Test Station Sale in Neepawa where dad had the lead off "Banner Bull" with a calf I helped bottle feed. After seeing "Hot Rocks" sell I thought... "If only I could do this someday! Selling bulls is fun! What would I do with a whole \$6500?? Dad must be rich!"

Fast forward close to 2.5 decades and dad still isn't rich (and neither am I)! I have purchased the purebred cows after a lifetime of work from Mom & Dad and the bulls are mine. I'm very excited and honored to have been given this opportunity and take our operation to the next generation and level.

To all of you, our customers, and friends (far and wide), I'd like to thank you all for the strong patronage throughout the years. It's you that keeps us in business. There's a few of you that have been customers of ours for over 30 years! It is very humbling. If you are new, I always enjoy meeting you all and I hope our cattle work well for you. Be sure to introduce yourself sale day.

In addition to our usual offering of yearlings, there will be a nice offering of powerful 2-year-old Charolais bulls. Our operation was built by selling 2-year-old bulls to the PFRA government pastures in the 80s and 90s. These bulls are not leftovers and were hand selected to be held over last November. They have never been offered for sale until now. They were grown out last winter, grazed on a quarter section all summer and brought in during the fall.

We are proud to offer you some of the most information that you will find in a bull sale catalogue to aid you in making your selection. The bulls in this sale have been sire verified through Quantum Genetix, have full carcass data, homo polled testing and the testing for the diluter gene in our homo red cattle. Complete performance data (BW, ADJ 205 and ADJ 365) is also provided. These bulls will be semen tested and READY TO WORK!

New this year we'd like to welcome First Class Marketing (Darnell Fornwald), Ryan Hurlburt (Auctioneer), Dory Gerrard, Kolton McIntosh, and Justin Carvey to our sales staff! All are professionals in the business and are some of the best people you will find.

We hope to see you sale day. Bring your children to the sale as that might mean early retirement! I know it worked for dad.

Thanks,  
*Jesse*

Welcome to the 8th annual Tri-N Charolais bull sale. It is with great pleasure that we will be working with the Nykolation family on this prestigious event. The Nykolation family has assembled a truly great pen of bull for your appraisal and with many of them being red factor is it also very unique. You will not find a pen of bulls with this many different genetic strengths anywhere in the country so please plan on joining us Sale day.

The bulls on offer are the right kind. Stout, hairy, good footed and sound with a tremendous set of mother cows behind them. The bulls are bred, developed and fed with the commercial cattle man in mind. These bulls are designed to go out and work so please bid and buy with confidence. There is a large selection of calving ease, power, white, tan, red, horned and polled bulls on both the yearling and 2 year old divisions. There is without a doubt a bull here to fit everyone's needs. Something very exciting on offer is also the pick of the heifer calves, this kind of thing does not come up for sale often so do not miss out, the revenue earning potential on this lot could be endless.

Please plan on joining us March 20th at the farm for the 8th annual bull sale. If for any reason you are unable to attend the sale do not hesitate to give anyone of the First Class team a call as we will all be very familiar with the offering and will be more than happy to assist you in purchasing your next Charolais herd sire. Mark Shologan with DLMS will also be on site if internet bidding is what you prefer. I hope to see you all at the sale.

Regards,

Darnell Fornwald  
FIRST CLASS MARKETING - 1.403.795.8030



Darnell Fornwald  
(403) 795-8030



Shay Martindale  
(780) 812-4581

# TRI-N *8th Annual* CHAROLAIS BULL SALE

**MONDAY, MARCH 20, 2023 - 2 PM**

*~ on the farm - Lenore, MB ~*

## **Sale Day Phones**

Merv Nykoliation ..... 204-851-2290  
Jesse Nykoliation ..... 204-851-3391

## **Sale Staff**

Ryan Hurlburt - Auctioneer, Saskatoon Livestock Sales ..... 306-292-9812  
Darnell Fornwald - First Class Cattle Marketing ..... 403-795-8030  
Shay Martindale - First Class Cattle Marketing ..... 780-812-4581  
Garret Liebreich - First Class Cattle Marketing, Ringman ..... 306-815-7078  
Dory Gerrard - Ringman, Gerrard Charolais ..... 403-302-1016  
Kolton McIntosh - Ringman, Ste Rose Auction Mart ..... 204-280-0359  
Terry Fehr - Sales Consultant ..... 204-362-7830  
Justin Carvey - Sales Consultant ..... 204-720-4721

## **Video Sale**

Videos will be available online at [www.trincharolais.com](http://www.trincharolais.com). This is a video sale so be sure to come early and go through the bulls thoroughly in the pens as they will not be coming through the sale ring.

## **American Purchases**

Business as usual for trade. You can still attend our sale. For those who cannot, we also have a very capable sales staff and online bidding. There have been no changes to the export of cattle. We will do all necessary health tests in a timely manner required for export. Animals will be delivered to the nearest point of entry at the seller's convenience. American Buyers will be charged an additional \$250/animal for the 1st animal and \$200/animal for each consecutive animal to cover health testing costs and delivery to the border. Exchange rates will be announced sale day at current bank rates. At the time of printing \$780 USD buys \$1000 Canadian. All animals are guaranteed exportable to the USA. If they don't pass their export tests, you don't own them!

## **Delivery**

If you are able to bring your trailer sale day, we will deduct \$100 from the purchase price of your bull. We can deliver your bull for \$100 for up to 200 kms. Anything over 200 kms, delivery will be at cost. We will work with you for further destinations.

## **Insurance**

Insurance will be available sale day from Keystone Livestock Services, Lois McRae - 204-573-5192.

## **Can't make the Sale?**

Just give us a call with the particulars (color, horn/poll, etc.) and we will find a bull that suits your program. Our sales staff will handle your bid in a professional manner. The sale will also be broadcast and internet bidding available on DLMS.

**Can't make it to the sale?**  
**Internet Bidding Available.**

To view this sale visit [www.dlms.ca](http://www.dlms.ca). Fill out the registration form located under registration and sign-up for your free user account and select a username and password.

**BIDDERS** - To be approved as a bidder, Log in to [dlms.ca](http://dlms.ca) and click BUYER APPROVAL tab, select the sale you are interested in bidding at and click sign up.

For more information  
Call DLMS Reps:  
Mark Sholigen - 780-499-5082 or  
DLMS Purebred Team 780-991-3525

**DLMS**  
[www.dlms.ca](http://www.dlms.ca)

## **DNA (PA) Testing & Sire Verification**

All bulls selling are sire verified through Quantum Genetics. We decided to test a select few for homozygous polled, homo red and for the diluter gene. Results are in the catalog. Bulls that are listed as "homozygous red non-diluters" are bulls that will only throw red or black on black cows (no greys). All yearling bulls selling have been PA tested and are negative.

## **Accommodations**

Jay's Inn, Virden 204-748-2223  
Comfort Inn, Virden 204-707-6020



## **View sale videos online**

[www.trincharolais.com](http://www.trincharolais.com)  
[www.firstclasscattlemarketing.com](http://www.firstclasscattlemarketing.com)  
[www.dlms.ca](http://www.dlms.ca)

## **TRI-N CHAROLAIS FARMS**

Box 879, Lenore, MB R0M 1E0

Merv & Joanne Nykoliation  
204.838.2107  
C. 204-851-2290  
[trincharolais@gmail.com](mailto:trincharolais@gmail.com)

Jesse Nykoliation  
204.851.3391  
 @jnykoliation  
 tri-n charolais farms



Box 237, Lampman, SK S0C 1N0  
[firstclasscattlemarketing@gmail.com](mailto:firstclasscattlemarketing@gmail.com)  
[www.firstclasscattlemarketing.com](http://www.firstclasscattlemarketing.com)

## TRI-N Charolais Herd Health

Full Herd Health program in coordination with Dr. Nadine Thiry, DVM, Virden Animal Hospital

**At birth:** Bovilis Nasalgen 3-PMH, Cocci Pill, Vitmaster, calves weighed, and DNA taken.

**Pasture Time:** Ultrabac Somnubac (Blackleg with Hemophilis), Pfizer One Shot Ultra 8 and Ivermectin.

**Weaning:** Ultrabac Somnubac (Blackleg with hemophilus), Pfizer One Shot Ultra 8 and Ivermectin.

Cowherd is on a full vaccination program for IBR, BVD, BRSV, PI3, and Scours. Cowherd minerals fed through TMR



*Provinces & States we have sold bulls  
to the Past 8 Years!*

## **DIRECTIONS TO TRI-N CHAROLAIS FARMS:**

### **SALE LOCATION AND YEARLING BULLS**

**From Crandall** - 6.5 miles S on Ravine Road

**From Kenton** - 6 miles N on HWY 21 to 71N. West (left) on 71N to 71N/145W. Turn south(left) half mile.

**From Lenore** - 2.5 miles N to speed curve, exit onto gravel and take 1st left(west), 1 mile west to 145W(Ravine Road), 3.5 miles North. Yard number 70097.

### **TWO-YEAR OLD BULLS**

**From TRI-N Charolais Farms**- 1.5 miles S on Ravine Rd to Rivers Rd. 3.5 miles E  
**Please come early as two year olds will not be at sale location day of sale.**

**Watch for signs!**



# A Humble Beginning

(Reprinted from "The Changing of the Guard Sale" Dec 2021)

The Nykoliatiion name is long standing and well known in the livestock industry and the Charolais breed throughout Canada and beyond for close to 50 years. The families' humble beginnings started with Beaver Creek Charolais (Len, Marilyn, Gord and Micheal Nykoliatiion and families) being the first in the 1970's. Shortly after, N7 Stock Farms (Gerald and Wendy Nykoliatiion and families) was established.

The early days consisted of attending many female production sales with Merv's brothers Len and Gerald throughout Manitoba and Saskatchewan. On one November day back in 1983, they attended the Dennis Toms Charolais Dispersal at the Virden Auction Mart.

Miss DTM 18L, a 1979 born daughter of Mr. JN Cadet 83F entered the ring (consigned by Dennis Toms of Redvers, SK). When she left, TRI-N Charolais Farms was born! The third Nykoliatiion in the purebred Charolais industry.

Today, well over 50% of the current TRI-N Charolais herd traces back to this first purchase. Cow families such as Prairie Rose, Creamsicle etc. all trace back to Miss DTM 18L. Beaver Creek Charolais were founding members of the West Man Breeders Group that were very active throughout the 70s, 80s and 90s. Through these sales Merv established his herd and later was an active consignor selling a few bulls and females in their annual bull and female sales held at the old Virden Auction Mart.

Performance testing played a large role from the beginning in the marketing of bulls for TRI-N. From the beginning bulls were entered in the Northwest (Roblin) Bull Test Station and the Manitoba (Douglas) Bull Test Station. Many top ten gaining bulls and banner bulls were consigned. In one year, TRI-N won both Roblin and Douglas Test Stations. The same was repeated with Douglas and Yellowhead.

Mervin was a founding member of the Yellowhead Bull Test Station in Neepawa and consigned every year until its ending in 2005. At this time, TRI-N consigned to the Cattlemans Classic Bull Multi-Breed Bull Sale in Virden with the other Charolais consignor Gord and Lisa Nykoliatiion of Beaver Creek Charolais.

Merv remembers distinctly when the bull TRI-N Prefix 54Y was offered for sale in the 2012 Cattlemans Classic bull sale. Back in those days there was no Facebook to promote your cattle, it was word of mouth and people face to face talking about it. When Prefix entered, the sales ring was jam packed, the alleys plugged and standing room only outside. Everyone was trying to get a look at the bull! Pretty dang exciting for little old Cattlemans Classic Virden, MB!

When the hammer finally fell Prefix went to Vikse Family Farm in Alberta and ended up being the highest priced Charolais bull in Canada that year. Interesting enough, a full sister to Prefix is the grandma of TRI-N Go North 2411H that sold this spring and ended up being the record high selling Charolais bull ever sold and bred in Manitoba history by public auction for \$80,000!

For ten years bulls were marketed through Cattlemans Classic. At this point Beaver Creek Charolais dispersed their cow herd. In 2015, TRI-N Charolais created their own bull sale at Heartland Livestock in Virden. In 2018, the bull sale was moved to the farm at Lenore, MB where it remains today.

Merv and Joanne Nykoliatiion have two daughters (Tanis and Brittni) and two sons (Jesse and Curtis).

In 1995, the family moved to the main farm on NW-25-12-25W1 after taking it over from Merv's mother (Jennie) after the passing of his father (Michael) where all 9 brother and sisters were raised.

The move went great and there were many family memories that were made. From the beginning, Tanis, Jesse and Brittni all took an active role in showing cattle in 4-H and the various Canadian Charolais Youth Association (CCYA) conferences throughout Canada.

Two CCYA projects included TRI-N Prairie Rose 401P (The beginning of the Prairie Rose cow family) and KCH Malibu 1M (the grandmother of TRI-N Malibu 72B). Both kids fell in love with the CCYA program, and the annual summer vacation was planned around the CCYA conference and shows location that year.

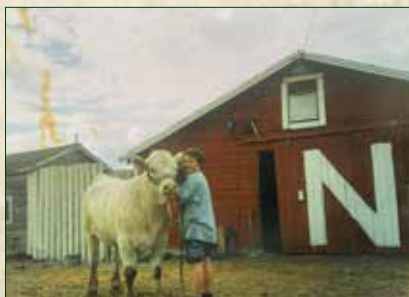
The kids are all grown up now. Tanis (Rob and grandkids Brooklyn, Ashley and Hudson Boyd) reside on a grain farm in Rapid City, Curtis (grandson Damon) lives in Basswood and Brittni (Trevor and grandkids Hunter and Parker Morris) live in Melita.

Jesse (with support of his partner Delaney) is involved in the daily affairs of the family farm and are in the process of taking it over from Merv and Joanne. He has grown his cow herd by purchasing Merv's mature cow herd and plans to continue in the industry and hosting the annual bull sale for many years to come.

This sale represents the true "Changing of the Guard" from one generation to another. Close to half a century in the making by the Nykoliatiion family.



Merv at Douglas Bull Test Station in 2001



Jesse and his 4-H Heifer



Merv & Joanne



# RS SCX *Jehu* 233E

CE 3.0 BW 0.9 WW 62 YW 137 M 20 TM 51      *Homozygous Polled*      13 sons on offer      Lots 1-13

**EPDs top 1% YW CW , 3% WW, 4% LMY, 5% REA and 10% TM**

**All the buzz! The Canadian record setting \$245,000 Charolais bull! Your LARGEST opportunity to select a son or grandson is in this sale!**

In the winter of 2019, I remember getting a text from our good friends Darren and John Cook, Triple C Charolais of Steep Rock, MB. They told me they have a great bull this year and he was the best bull they have raised in the past 50 years. His dam is one of their best cows and this bull is an absolute powerhouse. He had a full brother that was used in their herd and threw a very consistent set of calves.

After seeing his sale picture, we were blown away. When we saw him in person he was even better! Dad and I brought our good friends Jack, Tyler and Jared with us to the sale to critique the bull as we really value their eye for cattle. "Powerful, big barrelled, smooth made, free moving... and look at that muzzle on that bull!" All comments not made by us but by these astute cattlemen that day.

We must agree with everyone on this one. **SCX Jehu 233E is by far the stoutest, biggest barrelled, massive white bull we have used on our ranch the last 36 years.** He has calved so well and has thrown so much performance.

From his humble beginnings at Steep Rock, MB to our ranch in Lenore to having calves born in 2023 world-wide, Jehu is sure to have a lasting impact on the Charolais breed. His story has just begun!



John Cook and Jehu reunited



Jehu Dam - SCX MISS MAGNUM 109X



Jehu's Dam at 9 years of age

# The LARGEST offering of Jehu sons to sell this spring!

EPDs top 10% YW, 15% WW CW, 25% TM, 30% REA LMY and 45% BW

Dam and grand dam are still in production. Both cows are the type you could put on the cover of any sale catalogue. Feminine and beautifully constructed!!



8134F - Dam



Full Brother sells as Lot 45

Ultrasound Data	Marbling	Backfat (mm)	REA (in2)	Weight adj REA	%Lean Meat
	3.2	3.39	15.03	1.2	67.50

## 2 TRI-N *Forty Below* 227K

PMC842157 | NMF 227K | February 17 2022 | White, Polled

BW	Adj 205	Adj 365	CE	BW	WW	YW	M	TM	Gen Polled
100	877	1344	4.9	1.2	60	120	18	48	4

SCR TRIUMPH 2135 (P)

PRO-CHAR CPTN. MORGAN 8U (P)

Sire: SCX JEHU 233E (P)

Dam: TRI-N RATIONELLE 347A (P)

SCX MISS MAGNUM 109X (P)

TRI-N-RATIONELLE 26R (P)

EPDs top 2% YW, 4% WW, 10% CW, 20% TM and 25% LMY and 30% REA.

Full brother working at Francrest Farms Charolais (ON). Maternal siblings working for Clayton Toms (SK) and Highway 21 Feeders (AB). 2 daughters working in our herd.

Dam still in production at 10 years and grand dam produced until 13.

Ultrasound Data	Marbling	Backfat (mm)	REA (in2)	Weight adj REA	%Lean Meat
	4.0	5.24	14.44	1.15	65.13



NMF 50H - Maternal Brother



928G - Maternal Sister



**Herdbull!**

## 1 TRI-N *Northern Explorer* 3128K

PMC842256 | NMF 3128K | February 25 2022 | White, Polled

BW	Adj 205	Adj 365	CE	BW	WW	YW	M	TM	Gen Polled
89	743	1493	6.4	0.0	54	110	20	47	4

SCR TRIUMPH 2135 (P)

SCX THRILLER 89B (P)

Sire: SCX JEHU 233E (P)

Dam: TRI-N JEWEL 8134F (P)

SCX MISS MAGNUM 109X (P)

TRI-N COSMO 125D (P)



Monday, March 20, 2023 7

# JEHU SONS



EPDs top 10% YW CW, 15% WW TM and 45% milk.

Impressive bull off an impressive cow family.

Dam and grand dam still producing at 7 and 11 years of age. Grand dam will be entering our donor program shortly.



3127K and Dam - August 2022



NMF 2426H - Full Brother

## 3 TRI-N *Jehu* 3 3127K

PMC842254 | NMF 3127K | February 24 2022 | White, Polled

BW	Adj 205	Adj 365	CE	BW	WW	YW	M	TM	Gen Polled
96	894	1596	4.8	0.9	55	110	21	49	4

SCR TRIUMPH 2135 (P)

MVY XPLOER 21X (P)

Sire: SCX JEHU 233E (P)

Dam: TRI-N EMILY 137D (P)

SCX MISS MAGNUM 109X (P)

BEAVER CREEK 5TH AVE 210Z (P)



Won't be a year of age until the day after the sale!

## 4 TRI-N *Canadianna* 3146K

PMC842574 | NYK 3146K | March 22 2022 | White, Polled

BW	Adj 205	Adj 365	CE	BW	WW	YW	M	TM	Gen Polled
88	809	1537	7.2	-0.3	47	100	27	50	3

SCR TRIUMPH 2135 (P)

SCX THRILLER 89B (P)

Sire: SCX JEHU 233E (P)

Dam: TRI-N MALIBU 8147F

SCX MISS MAGNUM 109X (P)

TRI-N MALIBU PLD ET 52Y (P)

EPDs top 2% YW, 4% TM, 5% WW, 10% CW, 20% REA LMV, 35% Milk, and 40% BW.

As thick as we can make them! French influenced.

Same cow family that produced Go North, our \$80,000 high seller in 2021.

Dam and grand dam still in production at 5 and 11. Great grand dam produced until 11.

Ultrasound Data	Marbling	Backfat (mm)	REA (in2)	Weight adj REA	%Lean Meat
	4.5	6.69	17.32	1.29	65.98



8147F - Dam



72B - Maternal Sister to Dam

EPDs top 10% YW CW, 15% REA LMY, 25% TM and 35% WW Milk

Closely related to 3127K – Lot 3

Dam is one of the nicest cows my cousin Gord Ever produced.

Will be entering donor program



8151F - Maternal Brother

## 5 TRI-N *Polar Vortex* 3138K

PMC842265 | NMF 3138K | March 10 2022 | White, Homo Polled

Ultrasound Data	Marbling	Backfat (mm)	REA (in2)	Weight adj REA	%Lean Meat
	3.0	3.81	16.96	1.31	68.64

BW	Adj 205	Adj 365	CE	BW	WW	YW	M	TM	Gen Polled
89	870	1552	4.0	1.5	49	108	23	47	Homo

SCR TRIUMPH 2135 (P)

FFBB RED BUCKLE PLD 16X (P)

Sire: SCX JEHU 233E (P)

Dam: BEAVER CREEK 5TH AVE 210Z (P)

SCX MISS MAGNUM 109X (P)

BEAVER CREEK XOXO 810X (P)

## 6 TRI-N *Artic Joe* 241K

QPMC842172 | NMF 241K | March 01 2022 | Red, Polled/S

BW	Adj 205	Adj 365	CE	BW	WW	YW	M	TM	Gen Polled
92	836	1455	6.3	0.8	42	89	23	44	4

SCR TRIUMPH 2135 (P)

WINN MANS KANSAS 9135W (P)

Sire: SCX JEHU 233E (P)

Dam: TRI-N RAIN PLD 432B (QP)

SCX MISS MAGNUM 109X (P)

FFBB JENNY PLD 295Z (P)

EPDs top 2% YW, 3% CW, 10% LY, 15% REA and 30% WW TM Marb

Cow family tracing back to Dads pick of the Forsyth Bros. Dispersal

Dam and grand dam are still in production at 9 and 11 years of age.

Maternal brother to TRI-N OK Corral 53H, which semen has been marketed by Cattle Visions in the USA and owned by Cook Charolais Farms (MO USA)

Ultrasound Data	Marbling	Backfat (mm)	REA (in2)	Weight adj REA	%Lean Meat
	4.3	4.76	14.48	1.13	65.65



746E - Maternal Sister



53H - Maternal Brother



# JEHU SONS



EPDs top 15% WW YW, 25% BW, 30% CW, 40% CE and 45% TM

French influence in pedigree.

Jehu x Xplorer... this cross just works!!  
Calving ease and performance and strong maternal!



608D - Dam

## 7 TRI-N *Old Man Winter* 209K

PMC842141 | NMF 209K | February 04 2022 | White, Homo Polled

BW	Adj 205	Adj 365	CE	BW	WW	YW	M	TM	Gen Polled
89	813	1512	7.9	-1.2	53	107	18	45	Homo

SCR TRIUMPH 2135 (P)

MVY XPLOER 21X (P)

Sire: SCX JEHU 233E (P)

Dam: TRI-N NICKHEATA 608D (P)

SCX MISS MAGNUM 109X (P)

TRI-N NICKHEATA 420B (P)

Ultrasound Data	Marbling	Backfat (mm)	REA (in2)	Weight adj REA	%Lean Meat
	3.5	6.69	13.83	1.0	63.15

## 8 TRI-N *Great White* 3108K

PMC842226 | NYK 3108K | February 08 2022 | White, Homo Polled

BW	Adj 205	Adj 365	CE	BW	WW	YW	M	TM	Gen Polled
92	712	1421	7.1	-0.6	50	105	15	40	Homo

SCR TRIUMPH 2135 (P)

TRI-N ROCKEFELLER PLD 607D (P)

Sire: SCX JEHU 233E (P)

Dam: TRI-N MISS MELANIE 852F (P)

SCX MISS MAGNUM 109X (P)

TRI-N MISS CHARHEAD 917W (P)

EPDs top 15% YW, 25% WW, 30% CW, 35% BW and 45% REA.

Dam and grand dam are still in production at 5 and 14.  
Grand Dam produced until 10

Ultrasound Data	Marbling	Backfat (mm)	REA (in2)	Weight adj REA	%Lean Meat
	4.5	6.69	17.32	1.29	65.98



852F - Dam



63J - Full Sister

EPDs top 20% milk, 25% BW, 35% CE TM and 45% CW

Dam still in production.

Grand dam produced until 9 - was Dad's pick of the Bremner Charolais herd (Breeder of Jacks Foundation).



1C - Dam



4J - Full Sister



## 9 TRI-N *Snowy Mountain* 3116K

PMC842234 | NYK 3116K | February 14 2022 | White, Polled

BW	Adj 205	Adj 365	CE	BW	WW	YW	M	TM	Gen Polled
90	732	1501	8.2	-1.2	42	90	25	46	4

SCR TRIUMPH 2135 (P)

MVY XPLOER 21X (P)

Sire: SCX JEHU 233E (P)

Dam: TRI-N BARBRA ANNE 1C (P)

SCX MISS MAGNUM 109X (P)

BREMNNERS BARB 67U (P)

Ultrasound Data	Marbling	Backfat (mm)	REA (in2)	Weight adj REA	%Lean Meat
	3.3	3.81	16.92	1.30	68.61

## 10 TRI-N *Snow Baron* 234K

PMC842168 | NMF 234K | February 23 2022 | White, Homo Polled

BW	Adj 205	Adj 365	CE	BW	WW	YW	M	TM	Gen Polled
87	761	1364	6.6	0.4	48	98	16	40	Homo

SCR TRIUMPH 2135 (P)

VAL-END APPRAISER 24J (P)

Sire: SCX JEHU 233E (P)

Dam: TRI-N MISS CHARHEAD 917W (P)

SCX MISS MAGNUM 109X (P)

CHARHEAD MISS 23R (P)

EPDs top 25% YW, 30% WW and 35% CW

Maternal brother to our TRI-N Red Baron 765E herd sire, but white and sired by Jehu!

Dam is 14 and can still can raise the good ones! One of my favorite cows of all time.

Grand dam produced until 10 and was most notable for raising TRI-N Frank the Tank which you will find in many pedigrees in the USA.



Ultrasound Data	Marbling	Backfat (mm)	REA (in2)	Weight adj REA	%Lean Meat
	4.40	4.76	15.36	1.28	66.36



"\$80,000 high seller TRI-N Go North. Full brother to lots 11+12



## 11 TRI-N *Northern Lights* 228K

APPLIED | NYK 228K | February 18 2022 | White, Homo Polled

BW	Adj 205	Adj 365	CE	BW	WW	YW	M	TM	Gen Polled
96	815	1365	n/a	n/a	n/a	n/a	n/a	n/a	Homo

SCR TRIUMPH 2135 (P)

MVY XPLOER 21X (P)

Sire: SCX JEHU 233E (P)

Dam: TRI-N MALIBU 72B (P)

SCX MISS MAGNUM 109X (P)

TRI-N MALIBU PLD ET 52Y (P)

EPDs top 10% YW, 15% WW CW, 20% TM and 40% CE BW.

Ultrasound Data	Marbling	Backfat (mm)	REA (in2)	Weight adj REA	%Lean Meat
	4.0	5.24	14.87	1.13	65.48



72B - Dam Lot 11 & 12



2105J - Full Sister Lot 11 & 12

## 12 TRI-N *Northern Explorer* 3126K

PMC842253 | NYK 3126K | February 24 2022 | White, Polled

BW	Adj 205	Adj 365	CE	BW	WW	YW	M	TM	Gen Polled
90	793	1488	7.4	-0.4	51	104	23	48	3

SCR TRIUMPH 2135 (P)

MVY XPLOER 21X (P)

Sire: SCX JEHU 233E (P)

Dam: TRI-N MALIBU 72B (P)

SCX MISS MAGNUM 109X (P)

TRI-N MALIBU PLD ET 52Y (P)

EPDs top 15% YW CW and 20% TM, 25% WW, 35% CE BW and 45% milk

Lot 11 & 12 - Full Brothers to our 2021 high \$80,000 seller TRI-N Go North 2411H selling to Palmer Charolais (SK) and Bob Charolais (SK).

French influence.

Dam and grand dam still in production at 9 and 11. Great grand dam produced until 11.

Ultrasound Data	Marbling	Backfat (mm)	REA (in2)	Weight adj REA	%Lean Meat
	3.7	4.76	14.17	1.09	65.39

## 13 TRI-N *Plow Wind* 259K

PMC842566 | NMF 259K | March 15 2022 | White, Polled

BW	Adj 205	Adj 365	CE	BW	WW	YW	M	TM	Gen Polled
97	886	1566	4.1	2.2	58	121	23	52	4

SCR TRIUMPH 2135 (P)

TMJFYABOOM 189Y (P)

Sire: SCX JEHU 233E (P)

Dam: GCT ADELPHA 35A (P)

SCX MISS MAGNUM 109X (P)

GCT84Y (P)

EPDs top 2% YW CW, 10% WW REA LMY, 35% milk and 40% Marb

Dam is a nice uddered, deep bodied cow that was purchased at the Walking Plow Dispersal

Ultrasound Data	Marbling	Backfat (mm)	REA (in2)	Weight adj REA	%Lean Meat
	4.0	6.22	16.47	1.26	65.78

# JEHU 2 SONS

## RS SCX *Jehu 2* 236G

CE 4.9 BW 0.5 WW 51 YW 108 M 25 TM 51

Homo Polled, Leptin TT 5 sons on offer Lots 14-18

**EPDs top 10% YW TM CW, 15% Milk, 25% WW LMY, 30% REA and 35% Marb**

Like father like son! Two peas in a pod... Jehu and Jehu 2!!

As we believe consistency is key in our cow herd and bull pen, we are thrilled to offer you sons of the great Jehu and Jehu 2 ("Jehu Junior" as we call him)!

Not a lot of difference looking at father and son.

You would have to drive a lot of miles to find a deeper bodied and heavier muscled bull than Jehu 2! With all the meat and muscle he possesses, its truly remarkable how well he calves. They are born very easy, get up and suck quickly and these calves GROW!!

Be sure to check out the carcass data on these sons. Talk about a set of steers they will sire!!

Next years sale will have a larger offering of Jehu 2 sons.. we are already excited! Be sure to get in on the ground floor!!



**EPDs top 10% YW TM CW, 15% WW REA LMY, 20% Marb and 30% Milk**

Maternal brother to the sire of the 2023 NWSS Denver Champion Pen of 3 bulls... TRI-N Brooks 34H!!

The Brooks sons were the talk of the Denver Stock Show for Zhender Waage Partnership (MN).

Closely related on sire side. Colorado Low is sired by the Jehu son (Jehu 2) and Brooks is sired by Jehu.

Very rare opportunity to get a bull of this calibre!

Dam is still in production at 9 years. Grand dam is still producing for Louber Farms (QC) at 14!



TRI-N Brooks 34H - Maternal Brother



834F - Maternal Brother



2023 NWSS Champion Pen of 3 Charolais Bulls sired by TRI-N Brooks 34H

## 14 TRI-N *Colorado Low* 208K

PMC842140 | NMF 208K | February 4 2022 | White, Homo Polled

BW	Adj 205	Adj 365	CE	BW	WW	YW	M	TM	Gen Polled
95	893	1454	3.8	1.1	54	110	24	51	Homo

SCX JEHU 233E (P)

GRANT'S SYNERGY 41X (P)

Sire: SCX JEHU 2 236G (P)

Dam: MISS LOUBER SYNERGY 850B (P)

SCX MISS TRIGGER 117C (P)

LOUB MISS SANCHEZ 812W (P)

Ultrasound Data	Marbling	Backfat (mm)	REA (in2)	Weight adj REA	%Lean Meat
	5.0	5.75	15.59	1.12	65.54

Monday, March 20, 2023 13

# JEHU 2 SONS

## 15 TRI-N *Western Feel* 3118K

PMC842240 | NYK 3118K | February 15 2022 | White, Homo Polled

BW	Adj 205	Adj 365	CE	BW	WW	YW	M	TM	Gen Polled
90	729	1562	3.8	1.2	53	113	22	48	Homo

SCX JEHU 233E (P)

SCX THRILLER 89B (S)

Sire: SCX JEHU 2 236G (P)

Dam: TRI-N FRENCH MAID 9402G (P)

SCX MISS TRIGGER 117C (P)

BAR PUNCH MS VIZIR 4111B (P)

**EPDs top 15% TM, 20% CW, 25% YW Milk REA LMY and 35% WW**

Dam is a beautiful uddered, half French female that has a bright future here.

Very similar in his make up as his dad Jehu 2



Ultrasound Data	Marbling	Backfat (mm)	REA (in2)	Weight adj REA	%Lean Meat
	3.8	4.29	15.44	1.19	66.91



2443H - 3/4 Sister



2127J - Maternal sister by red sire



**EPDs top 20% REA, 25% CW Marb LMY, 30% TM, 35% YW Milk and 40% WW**

Maternal sister was feature heifer calf in "Changing of the Guard" Sale selling to Nashco Farms (Idaho USA).

Grand Dam produced Jehu son which is a herd bull for K-Cow Ranch (AB).

Traces back to Beaver Creek Winnaby 77W that dad bought from my uncle Leonard in 1987. Close to 40 years of Nykolation breeding into this bull!



958G - Dam



9J - Maternal sister

## 16 TRI-N *Blizzard* 3104K

PMC842219 | NYK 3104K | February 03 2022 | White, Homo Polled

BW	Adj 205	Adj 365	CE	BW	WW	YW	M	TM	Gen Polled
94	859	1516	7.7	1.2	52	109	20	46	Homo

SCX JEHU 233E (P)

CFC ALREADY PLATINUM 167D (P)

Sire: SCX JEHU 2 236G (P)

Dam: TRI-N NICKHEATA 958G (P)

SCX MISS TRIGGER 117C (P)

TRI-N NICKHEATA 726E (P)

Ultrasound Data	Marbling	Backfat (mm)	REA (in2)	Weight adj REA	%Lean Meat
	3.4	5.27	14.64	1.10	65.26

# 17 TRI-N *Solstice* 272K

PMC842570 | NMF 272K | April 09 2022 | White, Homo Polled

BW	Adj 205	Adj 365	CE	BW	WW	YW	M	TM	Gen Polled
95	907	1155	6.1	0.1	58	114	19	48	Homo

SCX JEHU 233E (P)

MVY XPLOER 21X (P)

Sire: SCX JEHU 2 236G (P)

Dam: TRI-N BUFFY 457B (P)

SCX MISS TRIGGER 117C (P)

TRI-N BUFFY 953W (P)

**EPDs top 15% WW, 20% YW TM, 30% CW and 40% BW**

Won't be a year of age until 20 days after the sale.

Dam still in production at 9. Grand dam produced 8 calves in row



456B - Full Sister to Dam



Ultrasound Data	Marbling	Backfat (mm)	REA (in2)	Weight adj REA	%Lean Meat
	4.4	7.14	12.95	1.17	61.97

**EPDs top 3% Milk, 10% BW TM and 20% CE**

Won't be a year of age until 2 weeks after sale.

Dam still in production at 9. Grand Dam and Great Grand Dam both produced until 15 and were Gold Star Dams of Distinction from Canadian Charolais Association.



TRI-N Prairie Rose 401P - Maternal sister to dam. Highest milk EPD female in Canadian Charolais Association. Sired by red bull.



# 18 TRI-N *Snow Romeo* 270K

PMC842198 | NMF 270K | April 04 2022 | White, Polled

BW	Adj 205	Adj 365	CE	BW	WW	YW	M	TM	Gen Polled
92	822	1407	9.8	-2.7	44	83	29	50	3

SCX JEHU 233E (P)

MVY XPLOER 21X (P)

Sire: SCX JEHU 2 236G (P)

Dam: TRI-N PRAIRIE ROSE 429B (P)

SCX MISS TRIGGER 117C (P)

TRI-N-MISS MONROE 244M (P)

Ultrasound Data	Marbling	Backfat (mm)	REA (in2)	Weight adj REA	%Lean Meat
	4.8	7.14	13.81	1.23	62.67

# VENDICATOR SONS



## RS TRI-N *Vendicator* 1017G

CE 4.9 BW 1.4 WW 53 YW 91 M 12 TM 38

Homo Polled 4 sons on offer Lots 19-22

### EPDs top 20% WW and 45% YW

Vendicator is a home raised bull that impressed us from day 1. Sired by our Winn Mans Terantino bull that was a main stay here and off a beautiful half French cow. One of the soundest footed bulls I've seen with piles of hair and length. French influence outcross herd bull who did a great job on his first calf crop.



## 19 TRI-N *Malanka* 205K

PMC842564 | NMF 205K | February 01 2022 | White, Homo Polled

BW	Adj 205	Adj 365	CE	BW	WW	YW	M	TM	Gen Polled
96	789	1338	7.7	-0.5	43	73	19	40	Homo

WINN MANS TERANTINO 9131Y (P)

MVY XPLOER 21X (P)

Sire: TRI-N VENDICATOR 1017G (P)

Dam: TRI-N RATIONELLE 639D (P)

TRI-N MISS MELANIE 329A (P)

TRI-N-RATIONELLE 26R (P)

### EPDs top 35% CE BW

Dam still in production. Grand Dam produced until 13. Traces back to one of dads original purchases Border Corner Astra 1X. Born in 1988 (Two months before Jesse!)

Ultrasound Data	Marbling	Backfat (mm)	REA (in2)	Weight adj REA	%Lean Meat
	3.4	8.12	15.74	1.24	63.24



## 20 TRI-N *Heaps Good* 3139K

PMC842266 | NYK 3139K | March 10 2022 | White, Polled

BW	Adj 205	Adj 365	CE	BW	WW	YW	M	TM	Gen Polled
93	856	1408	9.8	0.3	30	57	15	30	1

WINN MANS TERANTINO 9131Y (P)

MGM MERLOT (QS)

Sire: TRI-N VENDICATOR 1017G (P)

Dam: SDC MISS MERLOT 9W (QE)

TRI-N MISS MELANIE 329A (P)

PRAIRIE COVE MISS 34K

### EPDs top 30% WW, 35% REA Fat and 40% CE LMY

Dam was feature at SanDan Dispersal. Still in production at 14

Ultrasound Data	Marbling	Backfat (mm)	REA (in2)	Weight adj REA	%Lean Meat
	4.3	5.27	15.55	1.28	66.00

# VENDICATOR SONS

## 21 TRI-N *Billabong* 233K

QPMC842166 | NMF 233K | February 22 2022 | Red, Polled/S

BW	Adj 205	Adj 365	CE	BW	WW	YW	M	TM	Gen Polled
90	779	1329	6.1	0.4	47	82	14	38	4

WINN MANS TERANTINO 9131Y (P)

KCH MORROCO 15S (QP)

Sire: TRI-N VENDICATOR 1017G (P)

Dam: SVCH CAYENNE 2333C (QP)

TRI-N MISS MELANIE 329A (P)

BEAVER CREEK GRASSIE 233W (QP)

### EPDs top 35% Fat and 40% WW

Long spined, wide topped meat wagon whose calves will top the market every year!

Dam is a top cow in our herd tracing back to one of my cousin Gord Nykoliations best cows of all time.

Ultrasound Data	Marbling	Backfat (mm)	REA (in2)	Weight adj REA	%Lean Meat
	4.0	5.71	16.20	1.36	66.07



## 22 TRI-N *Melbourne* 235K

QPMC842201 | NMF 235K | February 24 2022 | Red, Homo Polled

BW	Adj 205	Adj 365	CE	BW	WW	YW	M	TM	Gen Polled
98	750	1330	4.7	1.1	55	108	16	43	Homo

WINN MANS TERANTINO 9131Y (P)

TRI-N CAPTAIN MORGAN 340A (QP)

Sire: TRI-N VENDICATOR 1017G (P)

Dam: TRI-N MS. MELANIE 793E (QP)

TRI-N MISS MELANIE 329A (P)

TRI-N MISS MELANIE 329A (QP)

### EPDs top 10% WW, 30% YW Marb and 40% Fat

Same cow family that produced Red Baron.

Dam and grand dam are still in production at 6 and 10. Great Grand dam produced until 10

Ultrasound Data	Marbling	Backfat (mm)	REA (in2)	Weight adj REA	%Lean Meat
	4.2	7.14	14.27	1.23	63.05

### Customer Testimonial

"We have purchased several red and tan bulls and females from the Nykoliations over the past 6 years. The bulls have put a lot of thickness and performance into our cattle and the females milk well. These bulls have sired great red and tan calves that sell great at the market every year. Thank you Merv and Jesse for allowing us to do this."

~Delvin and Char Walter, Walter's Charolais, Minot, ND ~



## RS JACK *Foundation* 7F

CE 7.1 BW 0.3 WW 38 YW 68 M 25 TM 45

Homo Polled, Homo Red (Non-dilutor) 10 sons on offer Lots 23-32

### EPDs top 10% Fat, 15% Milk, 40% CE and 45% BW REA

Our new red mainstay. Purchased from Bremner Charolais of Dauphin, MB. Jacks Foundation is a bull that started from the bottom and moved to the top. A bull that started his career on commercial cows before he saw heavy use in the purebred division. Foundations has exceeded our expectations! He calves extremely well and is a true herd bull. His first daughters that are calving here are phenomenal. A bull leaving his legacy here just like Captain Morgan did.

Foundation 2-year-old daughter



# FOUNDATION SONS



## 23 TRI-N *Bob Dylan* 201K

QPMC842133 | NMF 201K | January 27 2022 | Homo Red (Non-Diluter), Homo Polled

BW	Adj 205	Adj 365	CE	BW	WW	YW	M	TM	Gen Polled
90	728	1444	9.6	-0.4	41	74	23	43	Homo

PRO-CHAR YELLOW JACKET 6C (P)

TRI-N CAPTAIN MORGAN 340A (QP)

Sire: **JACK FOUNDATION 7F (QP)**

Dam: **TRI-N PRAIRIE ROSE 806F (QP)**

BREMNERS BRITTANY 348Y (QP)

TRI-N PRARIE ROSE 124T (QP)

EPDs top 15% Fat, 20% CE, 25% Milk and 35% BW

Close to 40 years dads breeding into one bull!

The best red bull we have raised!!

Most infamous cow family. Grand dam (124T), great grand dam (401P), great great grand dam (244M) and great great great grand dam (27H) all Gold Star Dams of distinctions. These cows produced until 14, 17, 15 and 14 respectively



58H - Maternal Brother



806F - Dam

Ultrasound Data	Marbling	Backfat (mm)	REA (in2)	Weight adj REA	%Lean Meat
	3.8	5.71	16.53	1.29	66.34



## 24 TRI-N *David Lee Roth* 3105K

QPMC842220 | NMF 3105K | February 06 2022 | Homo Red (Non-Diluter), Homo Polled

BW	Adj 205	Adj 365	CE	BW	WW	YW	M	TM	Gen Polled
90	809	1344	7	-0.4	45	82	21	44	Homo

PRO-CHAR YELLOW JACKET 6C (P)

BEAVER CREEK COUNTRY 261A (QP)

Sire: **JACK FOUNDATION 7F (QP)**

Dam: **TRI-N JEWEL 5147E (QP)**

BREMNERS BRITTANY 348Y (QP)

TRI-N JEWEL 59C (QP)

EPDs top 10% Fat, 35% BW, 40% Milk and 45% CE REA.

Dam, grand dam and great grand dam still in production at 6, 8 and 11 years old.

Close to 40 years of ours and my uncle Lens red factor Charolais breeding in this bull!

Ultrasound Data	Marbling	Backfat (mm)	REA (in2)	Weight adj REA	%Lean Meat
	3.6	3.39	15.21	1.22	67.65

# FOUNDATION SONS

EPDs top 15% Fat, 30% CE BW and 35% Milk

Dam still in production at 8.

Grand dam produced until 10.

Good cow family to add milk to your herd.



## 25 TRI-N *Prince* 213K

QPMC842146 | NMF 213K | February 08 2022 | Homo Red (Non-Diluter), Homo Polled

BW	Adj 205	Adj 365	CE	BW	WW	YW	M	TM	Gen Polled
88	806	1382	8.4	-0.8	44	79	22	43	Homo

PRO-CHAR YELLOW JACKET 6C (P)

TRI-N CAPTAIN MORGAN 340A (QP)

Sire: JACK FOUNDATION 7F (QP)

Dam: TRI-N NICKHEATA 1046C (QP)

BREMNERS BRITTANY 348Y (QP)

TRI-N NICKHEATA 950W (QP)

Ultrasound Data	Marbling	Backfat (mm)	REA (in2)	Weight adj REA	%Lean Meat
	3.6	5.24	14.26	1.11	64.99

## 26 TRI-N *Elton John* 203K

QPMC842563 | NMF 203K | January 28 2022 | Homo Red (Non-Diluter), Homo Polled

BW	Adj 205	Adj 365	CE	BW	WW	YW	M	TM	Gen Polled
94	750	1326	8.2	0.3	42	74	25	46	Homo

PRO-CHAR YELLOW JACKET 6C (P)

TRI-N CAPTAIN MORGAN 340A (QP)

Sire: JACK FOUNDATION 7F (QP)

Dam: TRI-N PRAIRIE ROSE 807F (QP)

BREMNERS BRITTANY 348Y (QP)

TRI-N PRAIRIE ROSE 124T (QP)



EPDs top 15% Fat, 30% CE, 35% TM and 45% BW

Full sibling in blood to 201K - Lot 23. Dam is a twin sister to the dam of 201K.

Most infamous cow family. Grand dam (124T), great grand dam (401P), great great grand dam (244M) and great great great grand dam (27H) all Gold Star Dams of distinctions. These cows produced until 14, 17, 15 and 14 respectively.

Ultrasound Data	Marbling	Backfat (mm)	REA (in2)	Weight adj REA	%Lean Meat
	3.5	5.27	15.66	1.29	66.08

# FOUNDATION SONS



EPDs top 20% TM, 25% Milk Fat, 30% CE, 35% BW WW and 45% REA

Dam has produced 3 feature bulls in a row.

High selling bull in 2019 to Cliff Lee Enterprises (MO, USA) as well as sons to Duchsherer Grain and Livestock (MT, USA) and UL Ranch (MT, USA).



9426G - Maternal Brother

## 27 TRI-N *Jimi Hendrix* 220K

QPMC842151 | NMF 220K | February 11 2022 | Homo Red (Non-Diluter), Homo Polled

BW	Adj 205	Adj 365	CE	BW	WW	YW	M	TM	Gen Polled
90	849	1364	8.6	-0.5	50	87	23	48	Homo

PRO-CHAR YELLOW JACKET 6C (P)

TRI-N CAPTAIN MORGAN 340A (QP)

Sire: JACK FOUNDATION 7F (QP)

Dam: TRI-N SALLY 501C (QP)

BREMNERS BRITTANY 348Y (QP)

TRI-N SALLY 41S (Q)

Ultrasound Data	Marbling	Backfat (mm)	REA (in2)	Weight adj REA	%Lean Meat
	3.6	6.19	16.06	1.25	65.47



## 28 TRI-N *Ozzy Osbourne* 219K

QPMC842150 | NMF 219K | February 10 2022 | Homo Red (Non-Diluter), Homo Polled

BW	Adj 205	Adj 365	CE	BW	WW	YW	M	TM	Gen Polled
88	732	1330	7.7	-0.4	39	73	23	43	Homo

PRO-CHAR YELLOW JACKET 6C (P)

TRI-N CAPTAIN MORGAN 340A (QP)

Sire: JACK FOUNDATION 7F (QP)

Dam: TRI-N MISS MELANIE 674D (QP)

BREMNERS BRITTANY 348Y (QP)

TRI-N MISS MELANIE 320A (QP)

EPDs top 20% Milk Fat and 35% CE BW

Dam is one of the nicest red cows we own.

Dam, grand dam and great grand dam are still in production at 7, 10 and 13

Ultrasound Data	Marbling	Backfat (mm)	REA (in2)	Weight adj REA	%Lean Meat
	3.6	4.76	15.57	1.29	66.53

# FOUNDATION SONS

## 29 TRI-N *Tom Petty* 210K

QPMC842142 | NMF 210K | February 06 2022 | Homo Red (Non-Diluter), Homo Polled

BW	Adj 205	Adj 365	CE	BW	WW	YW	M	TM	Gen Polled
95	907	1155	6.1	0.1	58	114	19	48	Homo

PRO-CHAR YELLOW JACKET 6C (P)

PLEASANT DAWN BONUS 601X (QP)

Sire: JACK FOUNDATION 7F (QP)

Dam: TRI-N MISS MELANIE 320A (QP)

BREMERS BRITTANY 348Y (QP)

MISS CHARHEAD 48X (QP)

**EPDs top 10% Fat and 15% Milk**

Dam and Grand Dam still in production at 10 and 13

Ultrasound Data	Marbling	Backfat (mm)	REA (in2)	Weight adj REA	%Lean Meat
	3.3	5.71	14.82	1.24	64.95



5J - Maternal Brother

**EPDs top 3% Milk, 10% REA Fat, 15% LMY, 25% TM and 35% Marb**

Maternal brother to TRI-N Bounty Hunter working at Effertz Key Ranch (ND) and Bina Charolais (ND)

Dam will be entering our donor program this year at 12 years of age. She hasn't missed a year. All sons and daughters have made bull sale or replacement pen.



NMF 66J - Maternal Brother



NMF 507C - Maternal Brother



NMF 623D - Maternal Brother



46H

Maternal Sisters

1002G



Ultrasound Data	Marbling	Backfat (mm)	REA (in2)	Weight adj REA	%Lean Meat
	3.3	5.24	17.65	1.47	67.74

## 30 TRI-N *Jon Bon Jovi* 242K

QPMC842174 | NMF 242K | March 01 2022 | Homo Red (Non-Diluter), Homo Polled

BW	Adj 205	Adj 365	CE	BW	WW	YW	M	TM	Gen Polled
95	821	1352	6.0	1.0	36	83	29	47	Homo

PRO-CHAR YELLOW JACKET 6C (P)

SOS CRIMSON TIDE 97S (P)

Sire: JACK FOUNDATION 7F (QP)

Dam: TRI-N BUFFY 63Y (QP)

BREMERS BRITTANY 348Y (QP)

TRI-N BUFFY II 51S (QP)

Monday, March 20, 2023 21

## 31 TRI-N *Alice Cooper* 3141K

QPMC842297 | NYK 3141K | March 19 2022 | Homo Red (Non-Diluter), Homo Polled



Ultrasound Data	Marbling	Backfat (mm)	REA (in2)	Weight adj REA	%Lean Meat
	4.5	6.69	12.79	1.09	62.30

BW	Adj 205	Adj 365	CE	BW	WW	YW	M	TM	Gen Polled
93	912	1350	5.3	1.1	61	101	16	46	Homo

PRO-CHAR YELLOW JACKET 6C (P)

TRI-N CAPTAIN MORGAN 340A (QP)

Sire: **JACK FOUNDATION 7F (QP)**

Dam: **TRI-N LADY TIME 124D (QP)**

BREMNERS BRITTANY 348Y (QP)

TRI-N LADY TIME 912W (QP)

**EPDs top 10% WW, 20% TM, 25% Fat and 45% YW**

Maternal brother was retained for our purebred herd. Last years brother was a feature tan bull selling to Kessler Ranch (ND USA).



8109F - Maternal Brother



124D - Maternal Brother

## 32 TRI-N *Brian Jones* 3122K

QPMC842245 | NYK 3122K | February 21 2022 | Homo Red (Non-Diluter), Homo Polled



Ultrasound Data	Marbling	Backfat (mm)	REA (in2)	Weight adj REA	%Lean Meat
	3.4	4.29	14.75	1.24	66.36

BW	Adj 205	Adj 365	CE	BW	WW	YW	M	TM	Gen Polled
100	709	1381	4.8	1.7	37	71	28	46	Homo

PRO-CHAR YELLOW JACKET 6C (P)

WRANGLER ON FIRE 49T (QP)

Sire: **JACK FOUNDATION 7F (QP)**

Dam: **CHARHEAD MISS MEL 38Y (QP)**

BREMNERS BRITTANY 348Y (QP)

MEL MS CHACONNE 14T (QP)

**EPDs top 4% Milk, 10% Fat and 40% TM**

Dam is still in production at 12 years of age. Has produced 7 bulls that have been marketed through this sale including 4 purebred herd sires.



2446H - Full Brother

## RS TRI-N *Red Baron* 765E

CE 11.6 BW -3.9 WW 60 YW 91 M 12 TM 42

Homo Polled, Homo Red (Non-Diluter) 6 sons on offer Lots 33-38

**EPDs top 4% BW WW, 10% CE and 45% YW**

Our 11th(ELEVENTH!) year marketing the Captain Morgan influence!! No guess work here about how this bloodline works! Are we excited that next year will be year 12? You bet!

Claimed by many visitors here as one of the soundest footed red herdsires you will find, Red Baron has stood the test of time. His sons have been extremely marketable over the years and his daughters are awesome. No guess work here!



# RED BARON SONS

**EPDs top 1% WW, 15% CE BW and 20% TM Marb**

One of the nicest Red Baron sons we have produced!! Black nose and black feet. Ready to throw black calves on black cows!

Full brother to the great TRI-N Warren Moon, a sale highlight selling to UL Ranch (MT, USA). Wait to hear more about this bull!

Dam and grand dam are still in production at 6 and 12



Tri-N Warren Moon 2155J - Full Brother

## 33 TRI-N *John Lennon* 3130K

QPMC842259 | NYK 3130K | February 26 2022 | Homo Red (Non-Diluter), Homo Polled

BW	Adj 205	Adj 365	CE	BW	WW	YW	M	TM	Gen Polled
89	966	1558	9.0	-1.2	59	97	20	49	Homo

TRI-N CAPTAIN MORGAN 340A (QP)

TRI-N CAPTAIN MORGAN 340A (QP)

Sire: TRI-N RED BARON 765E (QP)

Dam: TRI-N LADY RAVEN 5160E (QP)

TRI-N MISS CHARHEAD 917W (QP)

TRI-N LADY RAVEN 64Y (QP)

Ultrasound Data	Marbling	Backfat (mm)	REA (in2)	Weight adj REA	%Lean Meat
	3.9	4.33	14.24	1.02	65.90

## 34 TRI-N *Kyiv* 243K

QPMC845362 | NMF 243K | March 01 2022 | Homo Red (Non-Diluter), Polled

BW	Adj 205	Adj 365	CE	BW	WW	YW	M	TM	Gen Polled
87	755	1336	9.4	-2.6	52	85	14	40	3

TRI-N CAPTAIN MORGAN 340A (QP)

TWN YANGSTER 27Y (P)

Sire: TRI-N RED BARON 765E (QP)

Dam: TRI-N MONTE PYTHON 619D (QP)

TRI-N MISS CHARHEAD 917W (QP)

TRI-N MONTE PYTHON 390A (QP)

**EPDs top 10% BW WW, 15% Marb, 20% CE and 45% YW**

Generations of calving ease and maternal.

Dams a beautiful uddered tan cow.

Ultrasound Data	Marbling	Backfat (mm)	REA (in2)	Weight adj REA	%Lean Meat
	5.20	6.67	15.03	1.29	64.15



# RED BARON SONS



## 35 TRI-N *Lviv* 276K

QPMC842205 | NMF 276K | April 14 2022 | Tan, Polled

BW	Adj 205	Adj 365	CE	BW	WW	YW	M	TM	Gen Polled
88	1008	1270	9.8	-2.6	66	105	18	51	4

TRI-N CAPTAIN MORGAN 340A (QP)

SCX THRILLER 89B (S)

Sire: TRI-N RED BARON 765E (QP)

Dam: TRI-N BARBRA ANNE 861F (P)

TRI-N MISS CHARHEAD 917W (QP)

TRI-N BARBRA ANNE 1C (P)

**EPDs top 1% WW, 4% TM, 10% BW YW and 20% CE**

Won't be a year of age until 3 weeks after the sale. Takes a super good calf to make the yearling pen at this age!

Dam and grand dam still in production at 5 and 8. Could be the sleeper of the sale!

Ultrasound Data	Marbling	Backfat (mm)	REA (in2)	Weight adj REA	%Lean Meat
	3.50	3.81	14.49	1.19	66.63

## 36 TRI-N *Odessa* 256K

QPMC842186 | NMF 256K | March 13 2022 | Homo Red (Non-Diluter), Homo Polled

BW	Adj 205	Adj 365	CE	BW	WW	YW	M	TM	Gen Polled
93	904	1492	7.3	-0.3	54	90	21	48	Homo

TRI-N CAPTAIN MORGAN 340A (QP)

TRI-N CAPTAIN MORGAN 340A (QP)

Sire: TRI-N RED BARON 765E (QP)

Dam: TRI-N SASSY PLD 807E (QP)

TRI-N MISS CHARHEAD 917W (QP)

TRI-N SASSY PLD 59S (QP)

**EPDs top 2% WW, 20% BW, 25% Marb and 30% CE TM**

Dam still in production. Grand Dam produced until 11.

Maternal brother sold to Lay-ZZZZZ Charolais (NE) last year

Ultrasound Data	Marbling	Backfat (mm)	REA (in2)	Weight adj REA	%Lean Meat
	5.10	5.24	14.20	112	64.93

## 37 TRI-N *Cinch* 267K

QPMC842569 | NMF 267K | April 01 2022 | Homo Red (Non-Diluter), Homo Polled

BW	Adj 205	Adj 365	CE	BW	WW	YW	M	TM	Gen Polled
102	881	1502	4.8	1.8	52	84	20	45	Homo

TRI-N CAPTAIN MORGAN 340A (QP)

MVY XPLOER 21X (P)

Sire: TRI-N RED BARON 765E (P)

Dam: TRI-N PASSION 493B (P)

TRI-N MISS CHARHEAD 917W (QP)

TRI-N-PASSION 415P (P)

**EPDs top 10% WW, 35% TM, 40% BW and 45% CE**

Won't be a year of age until 12 days after the sale.

With Red Baron and Xplorer in his pedigree you have excellent calving ease and strong maternal.

Ultrasound Data	Marbling	Backfat (mm)	REA (in2)	Weight adj REA	%Lean Meat
	3.7	4.29	13.41	1.11	65.26



## 38 TRI-N *Carlos Santana* 269K

QPMC842197 | NMF 269K | April 01 2022 | Homo Red (Non-Diluter), Polled

BW	Adj 205	Adj 365	CE	BW	WW	YW	M	TM	Gen Polled
87	815	1357	10.2	-2.7	46	71	20	42	4

TRI-N CAPTAIN MORGAN 340A (QP)

MVY XPLOER 21X (P)

Sire: TRI-N RED BARON 765E (QP)

Dam: TRI-N BEYONCE 748B (QP)

TRI-N MISS CHARHEAD 917W (QP)

MISS CHARHEAD 48X (QP)

**EPDs top 4% BW, 10% CE and 15% WW**

Won't be a year of age until 11 days after sale.

Dam and Grand Dam still producing at 9 and 13.

Ultrasound Data	Marbling	Backfat (mm)	REA (in2)	Weight adj REA	%Lean Meat
	4.50	4.76	14.75	1.31	65.87

Sired by Red Baron off an Angus cow

# DARK HORSE/ICON

EPDs top 10% Fat, 25% REA LMY, 30% TM, 35% WW and 40% milk

Won't be a year of age until 12 days after sale.

Dam is one deep bodied cow that is still in production at 10. Great Grand Dam (124T), great grand dam (401P), great great grand dam (244M) and great great grand dam (27H) all Gold Star Dams of Distinctions. These cows produced until 14, 17, 15 and 14 respectively.



B&L Dark Horse 27G - Sire



Tri-N Prairie Rose 394A - Dam

## 39 TRI-N *Sorrel* 266K

QPMC842194 | NMF 266K | April 01 2022 | Homo Red (Non-Diluter), Polled

BW	Adj 205	Adj 365	CE	BW	WW	YW	M	TM	Gen Polled
100	828	1551	4.5	2.7	51	87	21	47	4

HRJ BULLETPROOF 411B (QP)

TWN WHISTLER 44W (QP)

Sire: B&L DARK HORSE 27G (QP)

Dam: TRI-N PRAIRIE ROSE 394A (QP)

KLD24C (P)

TRI-N PRAIRIE ROSE 102Y (QP)

Ultrasound Data	Marbling	Backfat (mm)	REA (in2)	Weight adj REA	%Lean Meat
	4.4	4.76	13.92	1.14	65.19

## 40 TRI-N *Icon* 3143K

QPMC842298 | NMF 3143K | March 21 2022 | Tan, Homo Polled

BW	Adj 205	Adj 365	CE	BW	WW	YW	M	TM	Gen Polled
94	848	1463	6.9	1.1	53	98	10	37	Homo

SOS HOOEY PLD 127D (P)

TRI-N CAPTAIN MORGAN 340A (QP)

Sire: MCTAVISH ICON 20G (P)

Dam: TRI-N JEWEL 59C (QP)

MCTAVISH FAYE 93E (P)

BEAVER CREEK JEWEL 203Z (QP)

EPDs top 15% Marb, 30% WW, 35% Fat and 45% YW

Won't be a year of age until day after the sale.

Outcross red genetics whose grand dam is still producing at 11 and was one of my favorites at the Beaver Creek Dispersal.

McTavish Icon 20G - Sire



Ultrasound Data	Marbling	Backfat (mm)	REA (in2)	Weight adj REA	%Lean Meat
	4.80	6.22	14.83	1.22	64.44

Monday, March 20, 2023 25



## 41 TRI-N *Aussie Made* 216K

APPLIED | NMF 216K | February 10 2022 | White, Homo Polled

BW	Adj 205	Adj 365	CE	BW	WW	YW	M	TM	Gen Polled
96	751	1480	n/a	0.2	31	60	16	32	Homo

PALGROVE CHARM (P)

VENTURON CRUSTY DEMON (P)

Sire: PALGROVE HALLMARK (P)

Dam: VENTURON HOLLIE (P)

PALGROVE ALYSSA 47 (P)

VENTURON FLORA (P)

Embryo calf with both parents being born and raised in Australia.

Complete outcross Australian Genetics. None of these genetics are available in North America!

Depth, frame, length... a serious herd bull!

Ultrasound Data	Marbling	Backfat (mm)	REA (in2)	Weight adj REA	%Lean Meat
	3.30	3.86	12.40	1.24	64.88

## 2-Year Old Bulls

*New in 2023...*

*we bring you a nice offering of powerful 2 year old Charolais bulls!!*



Our operation was built by selling 2 year old bulls to the PFRA government pastures in the 80s and 90s. These bulls are not leftovers and were hand selected to be held over last November. They have never been offered for sale until now. They were grown out last winter, grazed on a quarter section of pasture and stubble until November before coming to the yard to get fed for the sale.

*Please come early to view bulls on sale day as the two year olds will not be at the sale location.*

From TRI-N Charolais Farms- 1.5 miles S on Ravine Rd to Rivers Rd. 3.5 miles E



# TWO-YEAR OLDS

**EPDs top 25% Milk, 40% TM and 45% CE**

Dam was a feature in our "Changing of the Guard" female sale selling to Highway 21 Feeders (AB).

Grand Dam produced a purebred herd sire for Gulf Coast Cattle in Florida.



## 42 TRI-N *Guitar Man* 44J

PFC816942 | NMF 44J | February 19 2021 | White, Polled

BW	Adj 205	CE	BW	WW	YW	M	TM	Gen Polled
87	759	6.6	-0.1	57	117	20	48	4

TR PZC MR TURTON 0794 ET (P)

SCX THRILLER 89B (S)

Sire: PCC GUALTIERI 858F (P)

Dam: TRI-N PRAIRIE ROSEBUD 824F (P)

PRAIRIE COVE MISS 309A (P)

TRI-N PRAIRIEROSEBUD 207Z (P)

## 43 TRI-N *Pablo* 32J

PMC824989 | NMF 32J | February 15 2021 | White, Polled

BW	Adj 205	CE	BW	WW	YW	M	TM	Gen Polled
94	760	6.8	0.9	34	52	25	41	3

TR PZC MR TURTON 0794 ET (P)

MVY XPLOER 21X (P)

Sire: PCC GUALTIERI 858F (P)

Dam: TRI-N CREAMSICLE 431B (P)

PRAIRIE COVE MISS 309A (P)

TRI-N CREAMSICLE 97Y (P)

**EPDs top 15% Milk and 45% CE**

Same cow family produced our \$82,500 high seller Jehu son last year (TRI-N Arctic Wolf).

Dam and grand dam are still in production at 9 and 12 years old. Great grand dam produced until 12 and was the dam of the sire of SCX Thriller 89B which we sold sons off of for years.



52J - Maternal Brother



972G - Maternal Sister



# TWO-YEAR OLDS

## 44 TRI-N *Canuck* 96J

PMC824902 | NMF 96J | March 06 2021 | White, Homo Polled

BW	Adj 205	CE	BW	WW	YW	M	TM	Gen Polled
91	671	5.2	1.8	44	104	22	44	Homo

TR PZC MR TURTON 0794 ET (P)

BEAVER CREEK HARD-CORE299 (P)

Sire: **PCC GUALTIERI 858F (P)**

Dam: **TRI-N CREAMSICLE 97Y (P)**

PRAIRIE COVE MISS 309A (P)

TRI-N CREAMSICLE 85T (P)

**EPDs top 10% milk, 25% Fat and 45% CW**

## Customer Testimonial

"We purchased a bull at the Tri-N sale 6 years ago. He's still going strong with no signs of slowing down. We've been using him on our small black cows. We're happy with the calving ease and especially the impressive performance his calves come with. Most of all it's been a blessing to get to know the Nykoliations. Their service and hospitality are exceptional!!."

~The Reimers, Eden, MB~



**EPDS top 3% YW, 4% WW, 10% CW and 20% TM REA**

Stout made, Jehu son that will cover a lot of cows!



Tri-N Jewel 8134F - Dam



Full Brother sells as Lot 1

## 45 TRI-N *Jehu* 2178J

PMC827537 | NYK 2178J | March 04 2021 | White, Polled/S

BW	Adj 205	CE	BW	WW	YW	M	TM	Gen Polled
87	840	5.3	0.9	59	117	19	48	4

SCR TRIUMPH 2135 (P)

SCX THRILLER 89B (S)

Sire: **SCX JEHU 233E (P)**

Dam: **TRI-N JEWEL 8134F (P)**

SCX MISS MAGNUM 109X (P)

TRI-N COSMO 125D (P)

# TWO-YEAR OLDS

## 46 TRI-N *Famous* 102J

PMC818081 | NMF 102J | March 10 2021 | White, Polled

BW	Adj 205	CE	BW	WW	YW	M	TM	Gen Polled
83	741	10.5	-0.8	40	78	18	38	4

SOS HOOEY PLD 127D (P)

WINN MANS TERANTINO 9131Y (P)

Sire: **MCTAVISH ICON 20G (P)**

Dam: **TRI-N PRAIRIE ROSE 1008G (P)**

MCTAVISH FAYE 93E (P)

TRI-N PRAIRIE ROSE 402B (P)

**EPDs top 15% CE and 30% BW Marb**

Raised by a beautiful first calf heifer.  
Calving ease with performance, grand dam (12 years) are still in production.



Tri-N Prairie Rose 1008G - Dam



## 47 TRI-N *Rockstar* 2128J

PMC818706 | NMF 2128J | February 19 2021 | White, Homo Polled

BW	Adj 205	CE	BW	WW	YW	M	TM	Gen Polled
87	768	5.8	1.0	43	70	15	36	Homo

SOS HOOEY PLD 127D (P)

WINN MANS TERANTINO 9131Y (P)

Sire: **MCTAVISH ICON 20G (P)**

Dam: **TRI-N FRENCH MAID 9423G (P)**

MCTAVISH FAYE 93E (P)

SCF DAMARIS 326D

French Influence

Heifers first calf. So much length and width in this bull. One I really admire.



Tri-N French Maid 9423G - Dam



## 48 TRI-N *Maiden* 42J

PMC818082 | NMF 42J | February 18 2021 | White, Homo Polled

SOS HOOEY PLD 127D (P)

CFC ALREADY PLATINUM 167D (P)

Sire: **MCTAVISH ICON 20G (P)**

Dam: **TRI-N MARLENE 1010G (P)**

MCTAVISH FAYE 93E (P)

TRI-N MARLENE 729E (P)

**EPDs top 25% CE, 30% Marb and 45% BW**

Calving ease bull raised by a first calf heifer



Tri-N Marlene 1010G - Dam



# TWO-YEAR OLDS

## 49 TRI-N *Thriller* 2176J

PMC824906 | NYK 2176J | April 11 2021 | White, Homo Polled

BW	Adj 205	CE	BW	WW	YW	M	TM	Gen Polled
99	826	4.1	1.7	47	88	23	47	Homo

SCX THRILLER 89B (S)

HRJ BULLETPROOF 411B (P)

Sire: TRI-N THRILLER 888F (P)

Dam: TRI-N LADY RAVEN 5124E (P)

TRI-N PRAIRIE ROSEBUD407B (P)

TRI-N LADY RAVEN 82Y (P)

**EPDs top 30% TM, 35% milk, 40% WW CW and 45% YW**



## 50 TRI-N *Reilly* 94J

QPMC824898 | NMF 94J | March 06 2021 | Red, Homo Polled

BW	Adj 205	CE	BW	WW	YW	M	TM	Gen Polled
66	720	9.7	-0.7	38	73	13	33	Homo

HEJ CHESTER 1C (P)

VAL-END APPRAISER 24J (P)

Sire: HEJ EINSTEIN 28E (QP)

Dam: TRI-N MISS CHARHEAD 917W (QP)

HEJ CATALINA SUNRISE 68C (QP)

CHARHEAD MISS 23R (QP)

**EPDs top 4% CE and 5% BW**

Maternal brother to Red Baron and off the Einstein Bull.

Twin

## 51 TRI-N *Baron Jr* 2121J

APPLIED | NMF 2121J | February 16 2021 | Homo Red (Non-Diluter), Polled

BW	Adj 205	CE	BW	WW	YW	M	TM	Gen Polled
70	646	8.4	-0.2	53	85	11	37	4

PRO-CHAR CPTN. MORGAN 8U (QP)

VAL-END APPRAISER 24J (P)

Sire: TRI-N CAPTAIN MORGAN 340A (QP)

Dam: TRI-N MISS CHARHEAD 917W (QP)

TRI-N BUFFY 79T (QP)

CHARHEAD MISS 23R (QP)



**EPDs top 20% WW, 25% Marb, 30% CE and 40% BW**

Full ET brother to TRI-N Red Baron 765E whose sons and daughters have been some of the most impressive we have raised.

Calving ease bull with some of the best genetics you will find! Raised by a first calf heifer.

Tri-N Red Baron 765E - Full Brother

## 52 TRI-N *Tony Gonzalez* 95J

QPMC824982 | NMF 95J | March 07 2021 | Red, Homo Polled

BW	Adj 205	CE	BW	WW	YW	M	TM	Gen Polled
81	747	11.1	-3.2	36	53	11	29	Homo

TRI-N CAPTAIN MORGAN 340A (QP)

SPARROWS COACH 467S (P)

Sire: TRI-N RED BARON 765E (QP)

Dam: CORNERVIEW TANZY 28Z (QP)

TRI-N MISS CHARHEAD 917W (QP)

CORNERVIEW TANSY 3T (QP)

**EPDs top 10% BW and 15% CE**

Stout made, calving ease Red Baron son off a 11 year old cow.

Used on a select few purebred cows last summer. Will be trich tested before sale.

# TWO-YEAR OLDS

## 53 TRI-N *Mosby* 129J

QPMC818014 | NMF 129J | March 27 2021 | Red, Homo Polled

BW	Adj 205	CE	BW	WW	YW	M	TM	Gen Polled
92	756	9.5	-0.9	53	107	13	40	Homo

TRI-N CAPTAIN MORGAN 340A (QP)

TWN YANGSTER 27Y (P)

Sire: TRI-N RED BARON 765E (QP)

Dam: TRI-N DAISY 627D (P)

TRI-N MISS CHARHEAD 917W (QP)

TRI-N DAISY 326A (QP)

**EPDs top 2% Marb, 5% WW, 10% YW, 20% BW and 25% CE**

Maternal brother to the Semex AI sire TRI-N Van Halen 48H who is creating a buzz.

French influence and red factor.



Tri-N Daisy 627D - Dam



Tri-N Van Halen 48H - Maternal Brother - Semex sire

## 54 TRI-N *Stegall* 104J

QPMC825002 | NMF 104J | March 10 2021 | Homo Red (Non-Diluter), Polled

BW	Adj 205	CE	BW	WW	YW	M	TM	Gen Polled
84	773	12	-3.6	41	81	21	42	Homo

PRO-CHAR YELLOW JACKET 6C (P)

TRI-N ROCKEFELLER PLD 607D (QP)

Sire: JACK FOUNDATION 7F (QP)

Dam: TRI-N PRAIRIE ROSE 812F (QP)

BREMERS BRITTANY 348Y (QP)

TRI-N PRAIRIE ROSE 183Z (QP)

**EPDs top 10% CE BW and 25% Fat**

Used on a select few purebred cows last summer. Will be trich tested before sale.

Dam and grand dam still in production at 5 and 11 years. Great grand dam (401P), great great grand dam (244M) and great great grand dam (27H) all Gold Star Dams of Distinctions. These cows produced until 17, 15 and 14 respectively.



104J - under 12 months



## 55 TRI-N *Sergio* 2134J

QPMC824912 | NMF 2134J | February 24 2021 | Tan, Homo Polled

BW	Adj 205	CE	BW	WW	YW	M	TM	Gen Polled
88	765	7.7	-1	42	76	15	37	Homo

PRO-CHAR YELLOW JACKET 6C (P)

TRI-N CAPTAIN MORGAN 340A (QP)

Sire: JACK FOUNDATION 7F (QP)

Dam: TRI-N COSMO 106D (QP)

BREMERS BRITTANY 348Y (QP)

BEAVER CREEK BABY-C 256Z (QP)

**EPDs top 10% Fat, 25% BW, 40% CE and 45% milk**

Used on a select few purebred cows last summer. Will be trich tested before sale.

Dam is a super impressive females and traces back to the infamous Beaver Creek Cosmo cow which to this day is still one of my favorite red cows. She was raised by my cousin Gord and was one of my greatest mentors in the cow business.



## 56 **Pick of the 2023 Replacement Heifer Pen!**



In 36 years, we have only sold 8 females by public auction prior to the "Changing of the Guard Female Sale" held December 2021. As part of our farm transition plan, every bred heifer and first calvers were sold. This left the nucleus herd of females that have produced many of the bulls that you admire every year.

We feel this is our strongest set of open heifers to date. The pen consists of over 60 daughters of Jacks Foundation, TRI-N Red Baron, SCX Jehu, SCX Jehu 2, TRI-N Vendicator, Turnbolls Duty Free, HVA Fireball and B+L Dark Horse!

As cow families matter to us, you can select from any of them that call our ranch home. Prairie Rose, Creamsicle, Rationelle, Buffy, Monte Python etc. All these females trace back to the first cow dad bought in 1984 (Miss DTM 18L).

TRI-N Prairie Rose 401P (the start of the cow family) is the highest milk EPD female in the Canadian Charolais Association many years running. We put the cow down after 17 years of service and her feet and udder were still like a 5 year old!

Whether your choice is red, white or tan, you are selecting from a cowherd that's been developed over the past 4 decades! Come for a tour and see the cows. We are excited to offer the industry this opportunity.

*Pictures taken Fall 2021 for the TRI-N "Changing of the Guard" Female Sale*



### **2 BUYING OPTIONS:**

**Option A)** Choice to be made by April 15th and the heifer can go to its new home. They will be guaranteed to breed the first year.

**Option B)** Choice to be made by October 31, 2023 following preg check. We will winter, breed and feed the heifer free of charge. We just don't want to be calving her out.

The buyer is purchasing 100% interest and full possession. TRI-N reserves the right to one successful flush at the sellers' expense and the buyers convenience.

We will not be auctioning off this lot a second time, but if the buyer requests they can double the bid and purchase first and second pick.

# 2022

## *Thank you to our bidders and buyers!*

Liberty Charolais (WA Australia)

Hemingford Charolais (New Zealand)

Matthew Grogan (GA USA)

Shepherd Charolais (IA USA)

Triple T Ranch (IA USA)

Windin B Cattle (KS USA)

Wild Indian Acres (MO USA)

Brush Mitchell (MO USA)

L+N Charolais (MO USA)

Roger Elliott (MO USA)

Michael Crandell (MT USA)

UL Ranch (MT USA)

HD Cattle (MT USA)

Kermit Schiele (ND USA)

Kessler Ranch (ND USA)

C-B Charolais (ND USA)

Lay-ZZZZZ Charolais (NE USA)

VAL Charolais (OR USA)

Brady Mills (SD USA)

Van Dyke Charolais (SD USA)

Twisted S Ranch (SD USA)

Rocky Creek Charolais (AB)

K-Cow Ranch (AB)

Paul Bickerton (MB)

Darcy and Parker Watson (MB)

Randy Bryant (MB)

Cockerill Farms (MB)

Tyler Morrison (MB)

Cross Country Charolais (MB)

Cattle Lac Charolais (MB)

Prairie View Charolais (MB)

Harmon Charolais (MB)

David Peters (ON)

AYG Charolais (QC)

MRF Charolais (QC)

Southland Charolais (SK)

Lynn Cattle Co (SK)

Curtis Longman (SK)

Jerome Kress (SK)

Flying S Land and Cattle (SK)

Derek and Christina Palmer (SK)

T and M Farms (SK)

Steenbruggen Farms (SK)

Sliding Hills Charolais (SK)

Cedarlea Farms (SK)



## *It's your support that keeps us in the business!*

# CUSTOMER SATISFACTION



"We purchased a dark red Captain Morgan son (sight unseen) for our ranch in South Texas for our herd of Brahman cows. We are very impressed with the bull. He slicked off and adapted well to our warm climate. The calves are really impressive and are extremely uniform and beefy. Jesse and Merv know their cattle well and was a pleasure to deal with. Great folks-great cattle. I'd highly recommend their red Charolais bulls on your Brahman cows!!"

~Philip, Nora, James and Stella Drake  
P-N Cattle and Hay LLC, Edinburg, TX ~



"We have purchased several bulls over the past years from the Tri-N Bull Sale for our purebred and commercial herd, all sight unseen. We are very satisfied with all of our purchases. The bulls are easy to handle, quiet and sound. Their calves are very vigorous at birth, and the cows calve with ease. Mervin and Jesse do a great job of getting them delivered, even when they have to travel halfway across the country. I would recommend these genetics and their great personalized service any day! Buying a bull here is easy.

Thanks, and keep up the great job guys!"

~Mark and Tamy Frost, MRF Charolais. Kingsey Falls, Quebec~



"3 years ago, we began switching our bull pen to Charolais bulls for the simple fact the tan calves bring a premium in the ring. We have bought several bulls from Jesse and Merv over the past few years (all sight unseen) and found them to be sound, functional and affordable. They cross very well on our angus-based cows by adding thickness and length yet maintaining calving ease. We have been very impressed with the vigour the calves have at birth, they are up and going immediately. Merv and Jesse know their cattle very well and highly recommend their bulls."

~Luke & Jenn Smith and family. Sundre, AB ~



"Adding the Red Factor Charolais to our Red Angus based herd has increased the vigor and growth of our calf crops without giving up calving ease. These calves come out sleek and long bodied and they don't lay around to die. By the time you get the tag written out they are up and sucking. We have been very satisfied with Merv and Jesse's bulls, as they are sound footed and good breeders. They also have very quiet dispositions and are always easy to work with."

~ Ty and Sarah Neidhardt Richardton, ND, USA ~

## Terms & Conditions

### Terms

All on-site buyers are required to pay by Cheque, Cash, Debit, or by Visa or MasterCard (3% convenience fee on all credit cards) the day of the sale. Internet Buyers and US Buyers will have two (2) business days to wire Canadian Funds to Jack Auction Group for all purchases. All settlements must be made with the sale clerks before cattle will be released. The right of property will not pass until final payment is made.

### Bidding

Each animal will sell to the highest bidder. Bidders unable to attend the sale may phone their bids and instructions to the sale manager, auctioneer or special representatives. Bids must be received in sufficient time prior to the sale.

### Disputes

Bidding will be re-opened between the parties involved. If no further bid is made, the buyer will be the person from whom the auctioneer accepted the last bid. The auctioneer's decision is final.

### Announcements

Announcements made from the block will take precedence over printed matter in the catalog. Buyers are cautioned to pay close attention to announcements.

### Purchaser's Risk

Each animal becomes the risk of the purchaser as soon as sold. Animals will be cared for at the purchaser's risk for a reasonable length of time. All animals left with the seller must be insured.

### Certificate of Registration

Each animal will carry papers issued by their association unless otherwise stated in the catalog. A certificate of registry duly transferred will be furnished to the buyer after payment has been made.

### Breeder Guarantee

Should any bull fourteen months of age or over, fail to prove a breeder after being used on cows known to be breeders, the matter shall be reported in writing to the seller within six months following the date of purchase or six months after the bull has reached fourteen months of age. The seller has the right and privilege of six months to prove the bull a breeder. No guarantee is given that semen collected from the bull will freeze.

### Delivery

Assistance will be given in making delivery after the sale. The purchaser agrees shipping arrangements will be at the convenience of the seller, but will be as soon as practical after the sale, at the buyer's risk.

### Exception Guarantee

In the case where the animal is subject to any hormonal or surgical reproductive techniques after the sale, this guarantee shall be null and void. The seller is not responsible for damage caused by foreign bodies after the animal has been sold or for sickness not apparent at the sale time. In no event shall the seller be responsible for more than the purchase price.

### American Purchases

The sellers will do all health testing for export. Bulls will be delivered to the nearest point of entry at the seller's convenience. All American purchases will be charged additional fees for health testing and delivery as described on page 3. Exchange rates will be announced sale day at current bank rates. All bulls guaranteed exportable to the USA.

If you are an American citizen, you do not need a passport to enter Canada. However, you should carry proof of your citizenship (birth certificate, certificate of citizenship or naturalization as well as photo identification). More information is available at [www.cbsa-asfc.gc.ca](http://www.cbsa-asfc.gc.ca).

### Accidents

Although every precaution will be taken to protect the safety and comfort of the buyers, neither the sale manager, auctioneer or sellers assume any responsibility and disclaim any liability, legal or otherwise, in the event of accident or loss of property.

### Insurance

Insurance will be available sale day.

### Pictures

By attending the sale you are granting permission for your picture to be used for promotional and advertising purposes relating to the sale.

### Semen

Tri-N reserves the right to in-herd semen use on any bull sold in the sale, with semen drawn at the consignor's expense and the buyer's convenience. TRI-N reserves a 1/3 semen interest in all bulls selling unless other arrangements have been made prior to the sale.

**TRI-N Charolais Farms Ltd.**  
c/o Jesse Nykoliaton  
Box 879 Lenore MB R0M 1E0

~ Time Sensitive Material ~



# **TRI-N** *8th Annual* **CHAROLAIS BULL SALE**

**MONDAY, MARCH 20, 2023 - 2 PM - LENORE, MB**



*scx Jehu 233E  
19 sons and  
grandsons sell!*

